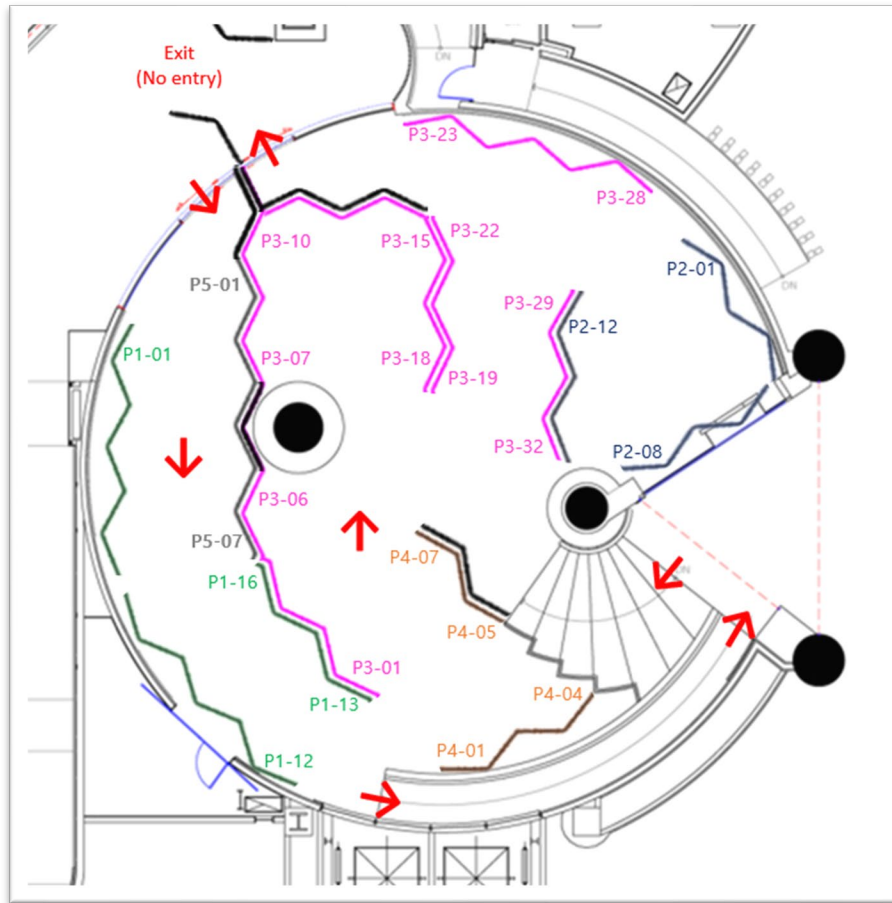


# Poster Exhibition

- Grand Ballroom Foyer -



- P1. Basic & Translational Research : 16**
- P2. IBD & Benign : 12**
- P3. Neoplasia : 32**
- P4. Pelvic Floor and Anorectal Disease : 7**
- P5. Stoma : 3, Wound Care : 4**

Abstract Submission No.	Poster Attachment No.	Topic	Abstract Title	Name	Affiliation
ABST-000003	P1-01	Basic & Translational Research	Factors Associated with Colorectal Cancer in FIT Positive Colonoscopic Screening Patients in Lampang, Thailand	Sasithun PLENGVITTAYA	Lampang Regional Hospital, Thailand
ABST-000004	P1-02	Basic & Translational Research	A Review of Bowel Preparation Practices of Surgeons for Elective Colorectal Surgery and Correlating with the Incidence of Surgical Site Infections in A Tertiary Hospital in Davao City	Marco Angelo CALIMBAS	Davao Doctors Hospital, Philippines
ABST-000019	P1-03	Basic & Translational Research	Total neoadjuvant therapy and organ preservation versus surgery for rectal cancer prospective, non-inferiority, randomized, controlled trial (STart).	Audrius DULSKAS	National Cancer Institute, Lithuania

ABST-000058	P1-04	Basic & Translational Research	Initial clinical experience of robotic colorectal cancer surgery using da Vinci SP platform	Yeongcheol CHEONG	Fujita Health University, Japan
ABST-000060	P1-05	Basic & Translational Research	Study of clinical and molecular pathologic features of Early onset Colorectal Cancer with mismatch repair deficient and Lynch syndrome	Satoshi SHIMAMURA	Kurume University, Japan
ABST-000083	P1-06	Basic & Translational Research	Left Sided Appendicitis in a Redundant Ascending Colon: A Case Report	Lovely Gay PASCUAL	Resident Physician, Philippines
ABST-000105	P1-07	Basic & Translational Research	Examination of risk factors affecting oncological outcomes after radical surgery in patients with rectal cancer who received standard neoadjuvant therapy	Mertcan TEKNECI	Istanbul Kartal Lütfi Kırdar City Hospital, Turkey
ABST-000112	P1-08	Basic & Translational Research	Prediction of Early Risk of Colorectal Cancer Based on Lifestyle Factors Via Machine Learning Models	Manvendra SINGH	HMFA, India
ABST-000116	P1-09	Basic & Translational Research	Solid lipid nanoparticles of ursolic acid mitigates azoxymethane/dextran sodium sulfate induced colorectal cancer via improving Wnt/ $\beta$ -catenin signalling pathway and intestinal microbiota	Deepika SINGH	SHUATS, India
ABST-000125	P1-10	Basic & Translational Research	Leiomyosarcoma – a rare primary tumor in the sigmoid colon: A Case Report	Khriisa Lea Elisa VIOLAGO	Ospital Ng Makati, Philippines
ABST-000168	P1-11	Basic & Translational Research	Evaluating the Efficacy of Rectus Sheath Catheters for Local Anaesthetic Infiltration in General Surgical and Colorectal Patients Undergoing Abdominal Surgery: A Single-Center, Single-Surgeon Retrospective Analysis	Mohammad Ar-Rafi Waseq HOSSAIN	Peterborough City Hospital, U.K
ABST-000179	P1-12	Basic & Translational Research	Exploring Phytosterols: Impact on Fecal Characteristics and Gut Microbiota in Constipated Middle-Aged Women	Pardeep KUMAR	Fhm College and Hospital, India
ABST-000183	P1-13	Basic & Translational Research	Comparative Analysis of Immunohistochemical Features in Early-Onset and Late-Onset Colorectal Cancer	Ji Yeon MUN	St. Vincent'S Hospital, The Catholic University of Korea, Korea
ABST-000199	P1-14	Basic & Translational Research	Beneficial effect of Surya Namaskar Yoga therapy with Aloe-Vera juice in irritable bowel syndrome patients	Ranbir SINGH	Shri Maha Maya Vaishnav Devi Research Institute,
ABST-000216	P1-15	Basic & Translational Research	Protective Role of $\alpha$ -Linolenic acid Pre-Treatment On N-Nitrosodiethylamine Induced Oxidative Stress In Male Albino Rats	Vikas SHARMA	Idc Research Center, India
ABST-000217	P1-16	Basic & Translational Research	Analysis of urbanization and frequency of colorectal cancers disease association with heavy metals level in river water index in Pune district in rural population	Ranbir SINGH	Shri Maha Maya Vaishnav Devi Research Institute, India
ABST-000011	P2-01	IBD & Benign	Hollow Viscus Perforation in Blunt Abdominal Trauma: A 14- Year Experience from a Trauma Center	Cristopher VARELA	Hospital Domingo Luciani, Venezuela
ABST-000016	P2-02	IBD & Benign	Taenia Infection Diagnosed by Colonoscopy : A Report of Two Cases	Guh Jung SEO	Dae Han Surgical Clinic, Korea
ABST-000070	P2-03	IBD & Benign	Perioperative results and long-term quality of life after colorectal resections for DIE with "safe anastomosis" technique.	Mariia CHICHERINA	Moscow Central Clinical Hospital, Russia
ABST-000084	P2-04	IBD & Benign	(Case Report) Anorectal inflammation in a patient diagnosed with HIV and Monkeypox synchronously.	Kughyun NAM	Incheon Songdo Surgery Clinic, Korea

ABST-000103	P2-05	IBD & Benign	Left-sided Amyand Hernia with Mobile Cecum: a Surgical Dilemma	Enrico SABATER	Ospital Ng Makati, Philippines
ABST-000147	P2-06	IBD & Benign	Current Concepts in Colonic Diverticular Disease	Francis SEOW-CHOEN	Colorectal Surgery, Singapore
ABST-000154	P2-07	IBD & Benign	Colopleural fistula: a rare case of diverticulitis induced lung abscess formation	Moon Suk CHOI	Inha University Hospital, Korea
ABST-000157	P2-08	IBD & Benign	Desmoid-type fibromatosis originated from jejunal mesentery	Jinhwi KIM	Department of Surgery, Korea
ABST-000188	P2-09	IBD & Benign	Sporadic Colorectal Cancer in Ulcerative Colitis Patients: A Report of Two Cases Involving Non-Colitic Sites	Jeehye LEE	Yonsei University Yongin Severance Hospital, Korea
ABST-000213	P2-10	IBD & Benign	Clinical Impact of Pharmacological Therapy on Colonic Transit Time and Chronic Constipation Severity in Post-Menopausal Women with Functional Gastrointestinal Disorders	Pardeep KUMAR	Fh Medical College and Hospital, India
ABST-000225	P2-11	IBD & Benign	Novel endoscopic clip for effective management of gastrointestinal perforations: Ex-vivo and In-vivo evaluation	Sunseok YOON	Korea University Ansan Hospital, Korea
ABST-000227	P2-12	IBD & Benign	Specialized training can reduce the recurrence rate of Pilonidal sinus and improve the outcomes- 5 year single institution data	Mohammed ISSA	Dudley Nhs Trust, U.K
ABST-000008	P3-01	Neoplasia	Double Trouble: A Case Report on Co-existing Gastrointestinal Tuberculosis with Colon Adenocarcinoma on a Filipino Patient	Marc Timothy TAN	Ospital Ng Makati, Philippines
ABST-000014	P3-02	Neoplasia	TME quality in rectal cancer surgery affects local recurrence rate but not distant recurrence and survival: a population-based cohort study.	Pamela BUCHWALD	Skåne University Hospital, Sweden
ABST-000020	P3-03	Neoplasia	: Is Primary surgical treatment of anal carcinoma safe and cost-effective in low resource settings?	Elroy WELEDJI	Faculty of Health Sciences, University of Buea, Buea, Cameroon
ABST-000043	P3-04	Neoplasia	Robot-assisted rectal surgery using the hinotori™ surgical robot system: Report of three cases	Kazuhito SASAKI	The University of Tokyo, Japan
ABST-000044	P3-05	Neoplasia	A prospective study on recovery from postoperative sarcopenia during adjuvant CAPOX therapy for colorectal cancer focusing on sex disparity	Hiroaki NOZAWA	The University of Tokyo, Japan
ABST-000050	P3-06	Neoplasia	A Study of Breast Cancer Diagnosed During Postoperative Surveillance for Colorectal Cancer	Hiromi OKU	Kurume University, Japan
ABST-000054	P3-07	Neoplasia	Usefulness of a powered circular stapler compared to a manual circular stapler in patients undergoing colorectal cancer surgery: a retrospective cohort study	Rie MIZUMOTO	Osaka University Graduate School of Medicine, Japan
ABST-000059	P3-08	Neoplasia	Initial experience of laparoscopic ISR for low rectal cancer in National Cancer Center of Mongolia	Khaliunaa BATTULGA	National Cancer Center of Mongolia, Mongolia
ABST-000064	P3-09	Neoplasia	Surgical Outcomes in Colonic versus Rectal Cancer Patients with Sarcopenia After Prehabilitation	Stephanie CHENG	Sengkang General Hospital, Singapore

ABST-000067	P3-10	Neoplasia	Deep learning of colonoscopy images predicts the treatment response of preoperative chemotherapy for rectal cancer	Shinya KATO	Graduate School of Medicine, Osaka University, Japan
ABST-000077	P3-11	Neoplasia	A Case of Santol Seeds Ingestion Presenting as Rectal Mass: A Diagnosis Dilemma	Arbel Joy PASCUA	VLMC AFPHSC, Philippines
ABST-000080	P3-12	Neoplasia	Examination of sarcopenia with obesity by Psoas muscle Mass Index in colorectal cancer patients as a prognostic factor	Kengo HARUNA	Osaka University, Japan
ABST-000085	P3-13	Neoplasia	Clinical and pathological correlations of recurrence after conventional follow-up completion in colorectal cancer patients	Jesung PARK	Seoul National University Hospital, Korea
ABST-000104	P3-14	Neoplasia	Rectal Prolapse in Geriatric Patients with Colorectal Cancer: A Case Series	Prapanca NUGRAHA	Universitas Padjadjaran, Indonesia
ABST-000108	P3-15	Neoplasia	Ileal Angiolipoma Manifested as Ileocolic Intussusception	Darielle Jacob GLORIANI	TBA, Philippines
ABST-000114	P3-16	Neoplasia	Radiotherapy-induced transverse colon sarcoma: a case report of a rare and poorly understood complication.	Lucas DROUILHAT	Universidad ICESI, Colombia
ABST-000118	P3-17	Neoplasia	Prolonged Postoperative Antibiotic Use Reduces Postoperative Complications in Elderly Patients with Colorectal Cancer	Go Woon PARK	Soonchunhyang University Hospital, Bucheon, Korea
ABST-000131	P3-18	Neoplasia	The Oncologic Outcomes of Central Lymph Node Metastasis and Laparoscopic D3 Lymph Node Dissection in Right Colon Cancer	Youngjin KIM	Seoul National University Hospital, Korea
ABST-000137	P3-19	Neoplasia	The Impact of Powered Circular Staplers for Anastomotic Leak in Left-Sided Colorectal Cancer Surgeries	Hayoung LEE	Asan Medical Center, Korea
ABST-000141	P3-20	Neoplasia	Unexpected rapid progression and double primary malignancies in an elderly appendiceal cancer patient	Gibong CHAE	Kangwon National University, Korea
ABST-000143	P3-21	Neoplasia	Pre-operative endoscopy does not increase the frequency of subtotal or total colectomy in patients presenting emergently with large bowel obstructions	Sarah WHITEHOUSE	Cairns and Hinterland Hospital and Health Service, Australia
ABST-000144	P3-22	Neoplasia	Comparative analysis of organ preservation attempt and radical surgery in clinical T2N0 mid to low rectal cancer	Hyeung-Min PARK	Chonnam National University Hwasun Hospital and Medical School, Korea
ABST-000155	P3-23	Neoplasia	Prognostic effect of adjuvant therapy after curative upfront surgery in low-risk pathologic T3N0 rectal cancer	Hong-Min AHN	Seoul National University Bundang Hospital, Korea
ABST-000163	P3-24	Neoplasia	Comparison of the Recurrence Rates Between Endoscopic Resection and Transanal Excision in T1 Rectal Cancer	Ah Young KANG	Seoul Songdo Hospital, Korea
ABST-000170	P3-25	Neoplasia	Young Onset Colorectal Cancer: A Retrospective Analysis on its risk factors and prognosis	Sun Jung KIM	Ajou University Hospital, Korea
ABST-000174	P3-26	Neoplasia	Big data analysis of surgical outcomes between primary right hemicolectomy and subsequent right hemicolectomy after appendectomy for appendiceal adenocarcinoma in South Korea	Dokyoon MOON	Seoul National University, College of Medicine, Korea

ABST-000196	P3-27	Neoplasia	Serum glucose variability increases the risk of postoperative complications following colorectal cancer surgery	Hyeon Woo BAE	Yonsei University College of Medicine, Korea
ABST-000205	P3-28	Neoplasia	Oncologic outcome of Multiple High-risk Features in Stage II Colon Cancer	Nahyeon PARK	Soonchunhyang University Bucheon Hospital, Korea
ABST-000209	P3-29	Neoplasia	Giant complicated mesenteric lymphangioma causing colonic stenosis: A Case report	Taehyung KIM	Yonsei University Yongin Severance Hospital, Korea
ABST-000211	P3-30	Neoplasia	Comparison of Sing-port versus Multi-port Surgery for Rectal Cancers: A Single-Center, Randomized Controlled Trial	Hye-Jin KIM	Kyungpook National University Chilgok Hospital, Korea
ABST-000219	P3-31	Neoplasia	Ambulatory colorectal surgery under ERAS recommendations: clinical outcomes after two years of protocol implementation in a high-complexity institution in Latin America.	Lucas DROUILHAT	Universidad ICESI, Colombia
ABST-000094	P3-32	Neoplasia	Exploring role of minimally invasive surgery for maximally invasive rectal cancer.	Yogesh BANSOD	Tata Memorial Hospital , Homi Bhabha National University Parel Mumbai, India
ABST-000010	P4-01	Pelvic Floor and Anorectal Disease	Stapled Hemorrhoidopexy: A way to solve the Obstructive Defecation Syndrome?	Cristopher VARELA	Hospital Domingo Luciani, Venezuela
ABST-000022	P4-02	Pelvic Floor and Anorectal Disease	Darvadstrocel, another form of treatment in the chronic fistulas	Julio José DEL CASTILLO DIEGO	Hospital Universitario Marqués De Valdecilla, Spain
ABST-000033	P4-03	Pelvic Floor and Anorectal Disease	Effectiveness of Nifedipine 2% vs. Nifedipine 2% and Metronidazole 1% for Treating Acute Anal Fissure	Cristopher VARELA	Cirugía Del Colon, Recto Y Ano, Venezuela
ABST-000039	P4-04	Pelvic Floor and Anorectal Disease	Phenylephrine-pramoxine combination for post-hemorrhoidectomy pain	Alp YILDIZ	University of Health Sciences, Turkey
ABST-000074	P4-05	Pelvic Floor and Anorectal Disease	Is the depth of the artery important in Doppler-guided hemorrhoidal artery ligation?	Serkan ZENGER	Vkf American Hospital, Turkey
ABST-000134	P4-06	Pelvic Floor and Anorectal Disease	Strangulated Complete Procidentia in Young Adult Male- A Rare Anorectal Emergency: A Case Report	Krishna KUMAR	TBA, India
ABST-000139	P4-07	Pelvic Floor and Anorectal Disease	Laparoscopic Ventral Mesh Rectopexy for Obstructed Defaecation – Does Persistence of Symptoms Correlate to Persistence of Anatomical Abnormality?	Karekin KESHISHIAN	Barts Health NHS Trust, U.K
ABST-000079	P5-01	Stoma	Examination and prediction of peristomal skin damage using an AI-empowered model	Rie HAYASHI	Osaka University, Japan
ABST-000086	P5-02	Stoma	Temporary Ileostomy Closure Surgery after Low Anterior Resection for Rectal Cancer: Our Experience	Julio José DEL CASTILLO DIEGO	Hospital Universitario Marqués De Valdecilla, Spain
ABST-000173	P5-03	Stoma	Title: Digital based home care service for ostomy patients: randomized controlled trials	Sanghyun AN	Department of Surgery, Yonsei University Wonju College of Medicine, Korea
ABST-000031	P5-04	Wound Care	Use of Hydrocolloid Gel with Alginate in Cavitated Wounds after Drainage of Anorectal Abscesses	Cristopher VARELA	Hospital Domingo Luciani, Venezuela

ABST-000034	P5-05	Wound Care	Modified Hanley Technique for Horseshoe Anorectal Abscess: A Retrospective Series of Cases	Cristopher VARELA	Hospital Domingo Luciani, Venezuela
ABST-000169	P5-06	Wound Care	Management of Skin tears using Soft Silicone-Coated Wound Contact Layer (Mepitel One).	Juyoung OH	Inha University Hospitar, Korea
ABST-000175	P5-07	Wound Care	Clinical Outcomes and Management Strategies for Postoperative Enterocutaneous Fistulas: A Single-Center Perspective	Hyunsuk PARK	Severeance Hospital, Korea